





OPUS Building Materials takes great pleasure in introducing ourselves as a project partner for Space Management solutions, Specialized/Innovative Architectural and Interior finishing products with a mission to provide design, supply and installation of the right product solutions for your project.

We at Opus, bridge the Gap between world's leading Manufacturers and the Architects & Designers Community.

Our solutions includes Space Management Systems, Architectural products for Internal and External areas which are aesthetically pleasing and comes with a premium quality.

# PRODUCT RANGE

## ARCHITECTURAL PRODUCTS:

- Movable / Operable Walls, Partitions & Glass Walls
- Acoustic Wall Panels & Baffles (Wooden & Fabric Panels)
- Auditorium Seating
- Retractable Seating & Stages
- Stadium & Sport Hall Seating
- High Pressure Laminate (HPL) Cubicles & Lockers
- Metal Lockers
- Demountable Glass Partitions & Fixtures
- Raised Access Flooring
- Rubber Flooring
- Stretch Ceiling System
- Outdoor Furniture

## EXTERIOR CLADDING PRODUCTS:

- Kalwall - Translucent Sandwich Panels
- Vitreous Enamel (VE) Architectural Cladding
- Technowood – Aluminum Profiles & Plates

## RESIDENTIAL SEGMENT PRODUCTS

- Bamboo Decking with Magnetic Installation
- WPC Decking
- Acoustic Walls/Ceilings Panels & Baffles
- Acrylic Solid Surface
- Home Theatre Seating System

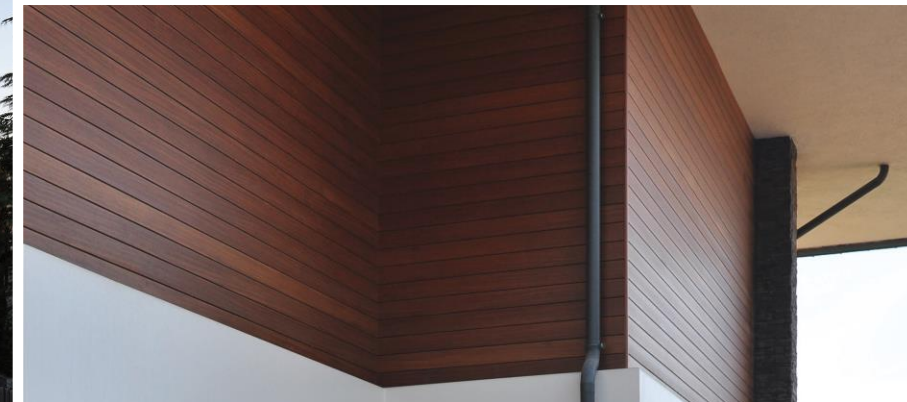




# TECHNOWOOD – Aluminum Profiles & Plates

Technowood is a product that emerges with natural wood veneering of the Aluminum profile/sheets or GRP (glass fibre-reinforced polyester) profiles/sheets that are durable to outdoor conditions.

Technowood products can be used in all places that wood products can be used, in interior and exterior spaces as well as facade systems.

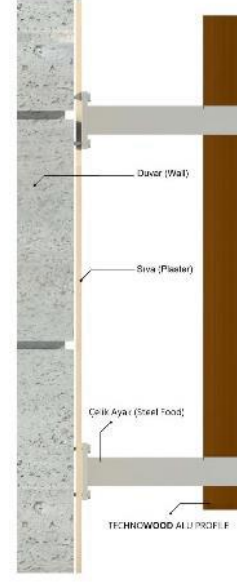
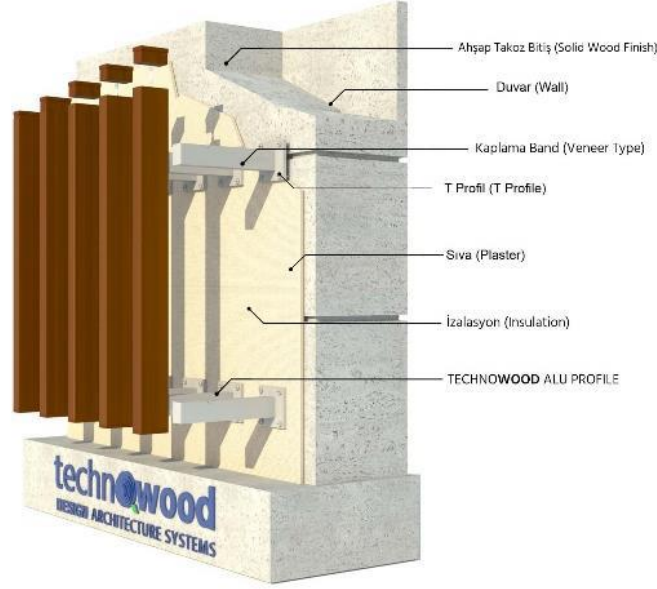




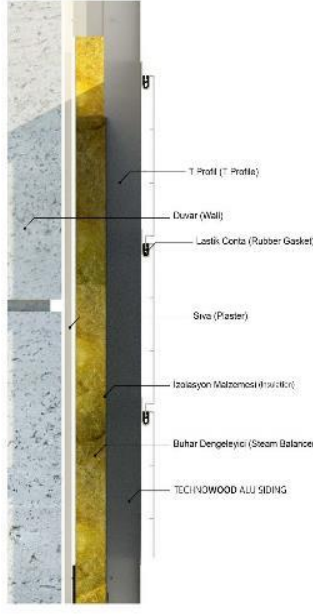
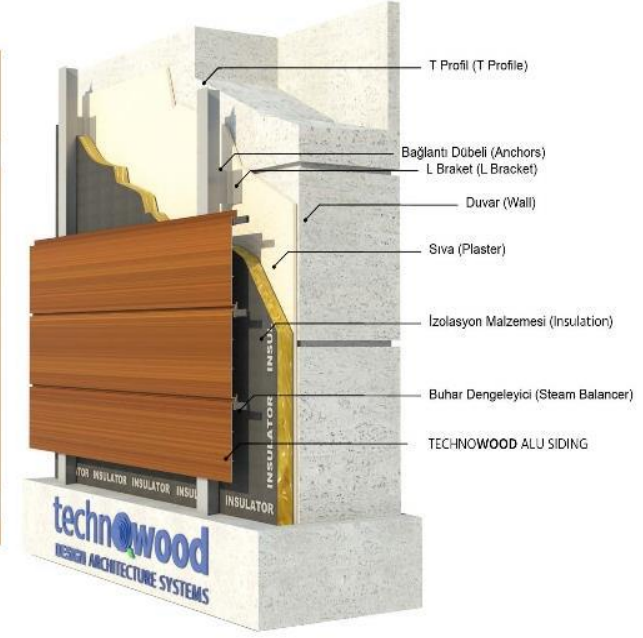
# ADVENTAGEOUS FEATURES

- 100% natural wood veneer
- A2 Class Fire Resistance
- Easy application
- High endurance
- Esthetic
- Long life
- No bugs
- No deformation
- Eco-friendly
- High quality
- Traditional
- Sustainable
- Flexible

TECHNOWOOD ALU PROFİL  
CEPHE KAPLAMA SİSTEMİ GÖRSELİ



TECHNOWOOD ALU SİDİNG  
CEPHE KAPLAMA SİSTEMİ GÖRSELİ



GRP or Aluminum + Natural Wood Veneer = TECHNOWOOD

TECHNOWOOD ALU PROFILE



TECHNOWOOD ALU SİDİNG



**FSC Certified Veneers:** Teak, Mahogany, Iroko, Oak, Beech Wood.













## VITREOUS ENAMEL

**Vitreous Enamel (VE)** Architectural panels that consist of a practically indestructible glass coating fused under high temperatures to a steel surface.

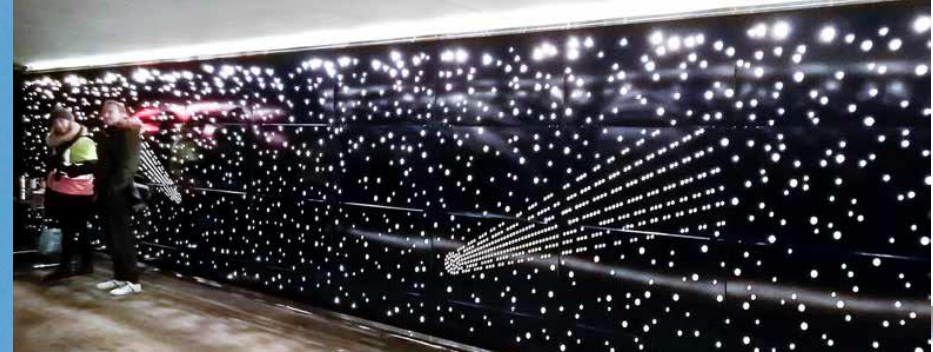
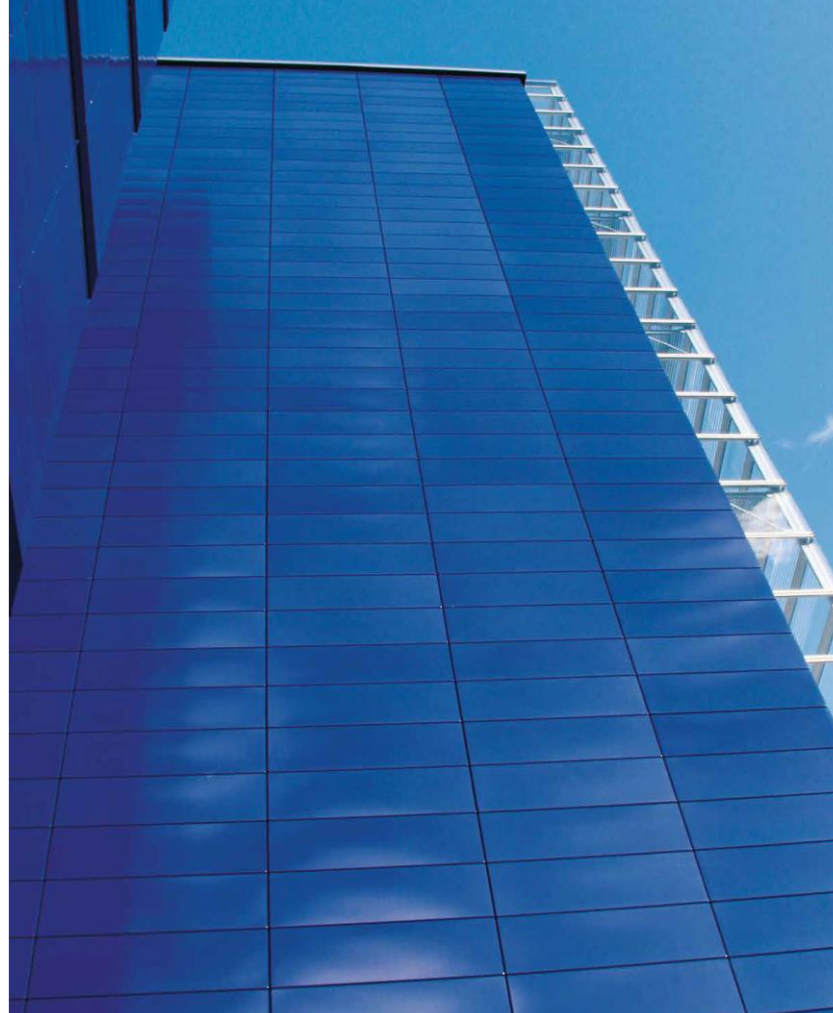
VE panels are a completely **non-combustible** steel cladding system, withstanding temperatures of over 400°C and are able to provide fire ratings of over 2 hours.





## PERFORMANCE CHARACTERISTICS:

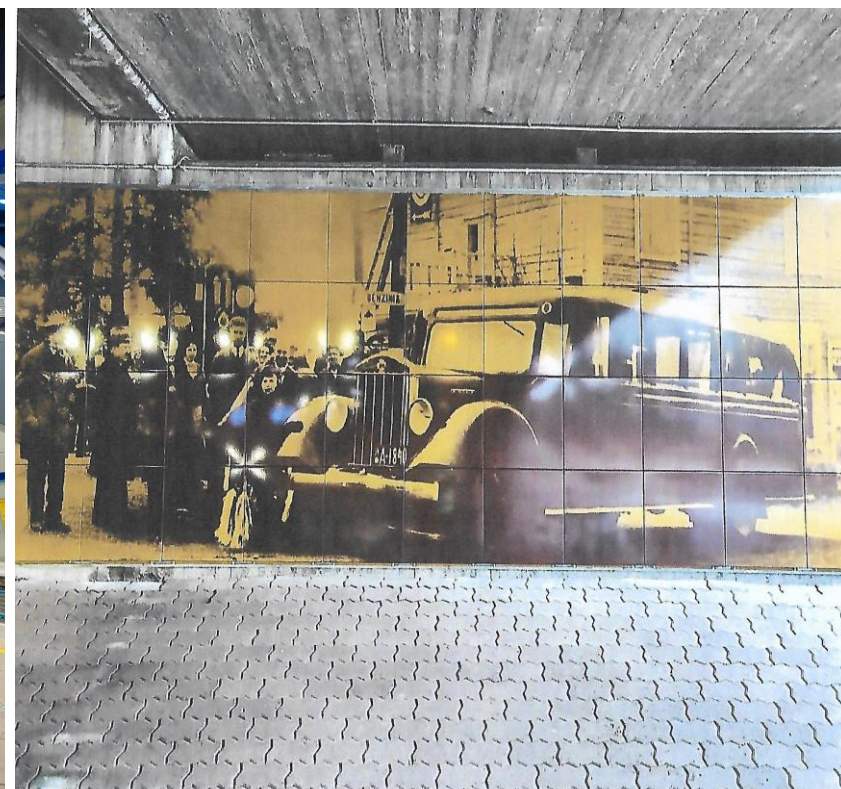
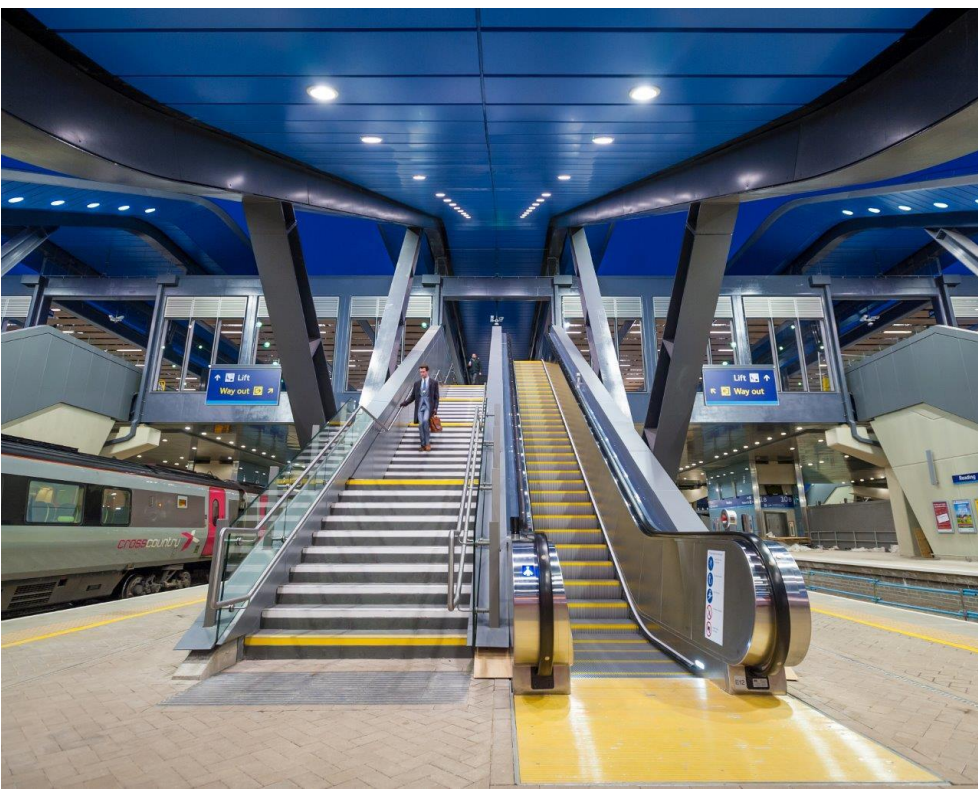
- Extreme Durability
- Sustainable
- Economical
- Corrosion Resistant (ISO 2746)
- Resistance To Graffiti (ISO 2722)
- Weather Resistance (ISO 2722)
- Incombustible: Fire Rating A1 (DIN 4102)
- Impact Resistance (ISO 4532)
- Acid Resistance (ISO 2742)
- Resistance to Temperature Fluctuations (-60°C / +450°C)
- No Fading – UV Light Resistance
- Abrasion Resistance
- Hygienic And Anti-bacterial
- Thermal Shock Resistance













# KALWALL®

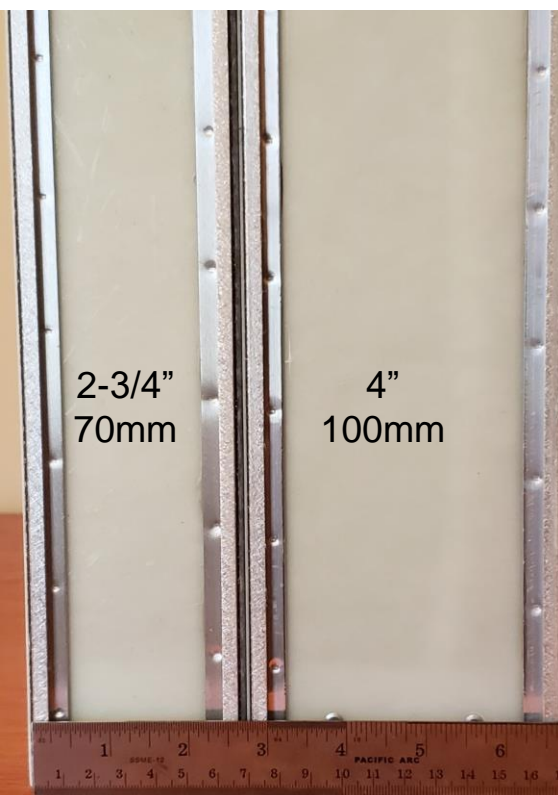
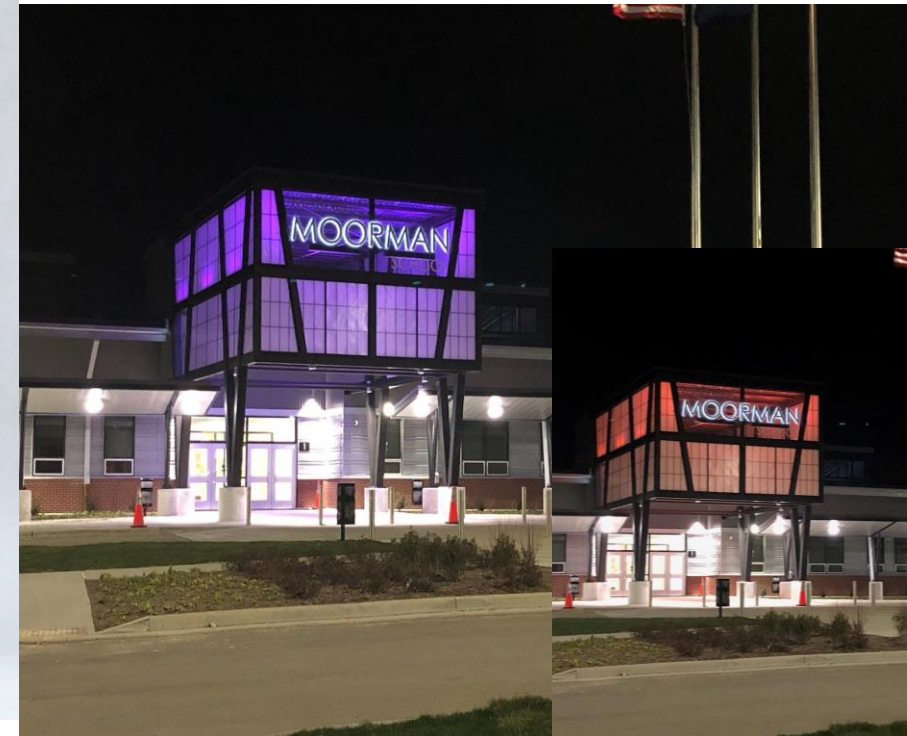
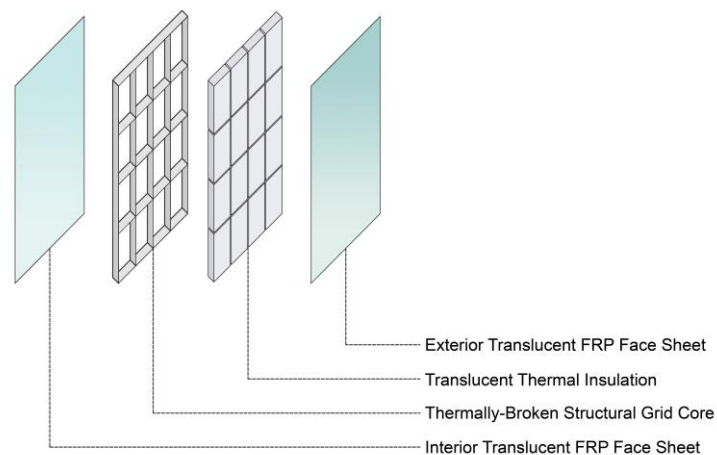
high performance translucent building systems

Kalwall fills spaces with well-balanced, natural daylight with the help of millions of prismatic glass fibers embedded in our panel's translucent face sheets. These prisms refract sunlight to provide a balanced, diffuse wash of glare-free, usable light, deep within spaces. Colors are fully saturated and bold within Kalwall spaces, often referred to as museum-quality™ **Daylighting**.





## Translucent Composite Panel Technology



## ENERGY PERFORMANCE

- Light Transmission – 3% to 63%
- R-Values – 2 to 20
- U-Values: 1.31 to 0.28 W/m<sup>2</sup>k
- Low Solar Heat Gain (SHG) – 0.65 to 0.04
- High Condensation Resistance Factor (CRF)  
80 Gridline / 90 Center of Cell



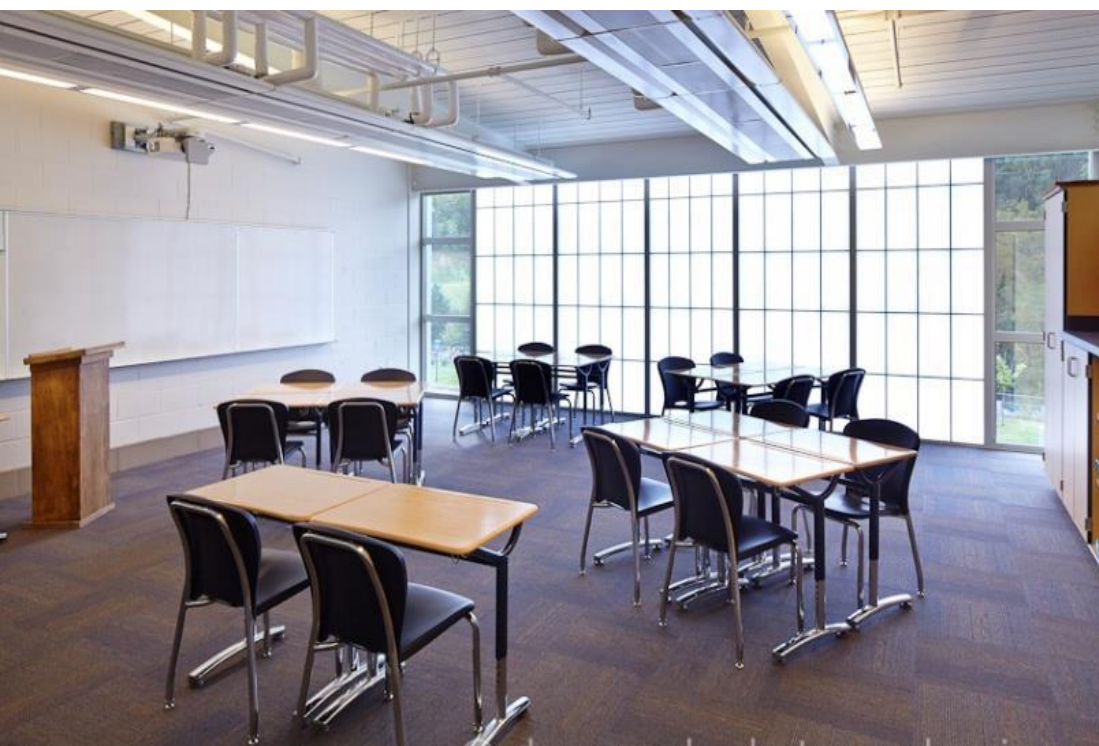
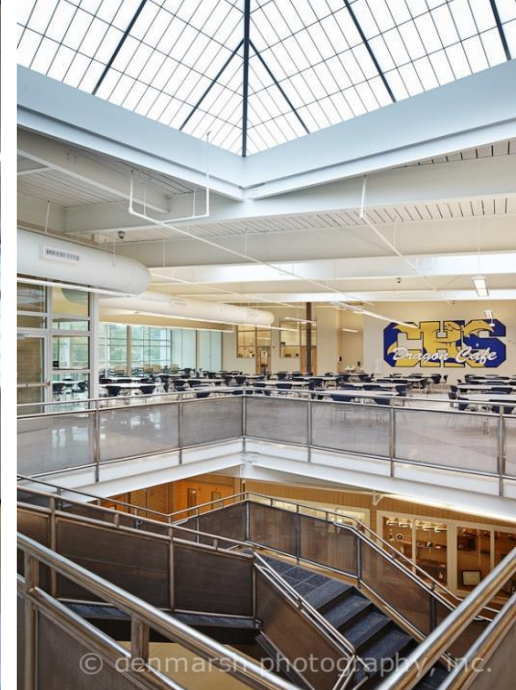


## Dubai Metro Workshops

Kalwall figures prominently in the Dubai Metro workshops. Diffuse natural lighting provides natural lighting in work areas inside the shops while limiting solar heat gain in this unconditioned space.









# MOVABLE / OPERABLE WALLS, PARTITIONS & GLASS WALLS

**Operable walls** are widely used to divide spaces acoustically (up to 55 dB) in,

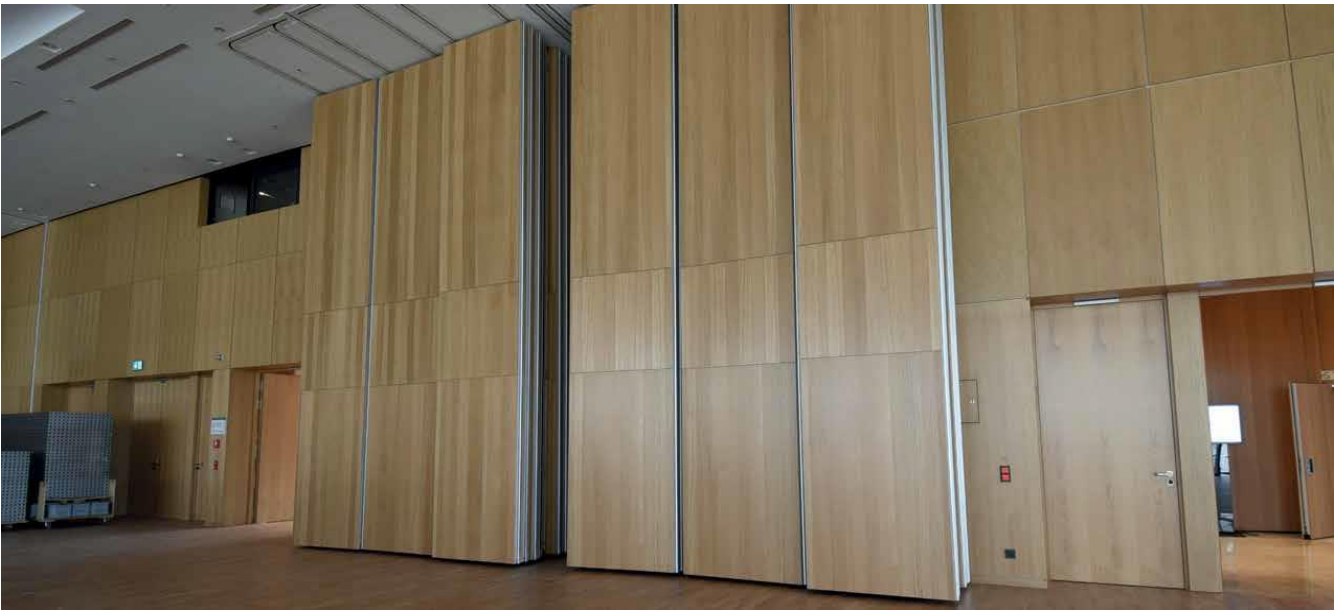
- Convention centers
- Hotel ballrooms
- Marriage Halls
- Community halls
- Private Majlis
- Offices
- Multipurpose Halls

## Types of Operable Walls

- Automatically Operated
- Semi-Automatically Operated
- Manually Operated











## ACOUSTIC FABRIC PANEL WITH TRACK SYSTEM

- Combine high quality aesthetics & acoustic treatment to suit any space
- High density insulation panels for broad band absorption
- Durable stretch fabric available in an array of colors
- Acoustic treatment with Modular track system for virtually any surface
- Easy and quick assembly for permanent installation





# FABRIC WRAPPED FIBERGLASS INSULATION

Fabric wrapped panels are totally wrapped with transparent fabrics with fiberglass insulation which reduces noise reflections (reverberation) and improves interior acoustic.

- Excellent sound absorption
- Easy to install
- Fire resistance
- Fabric can be customized
- Lightweight





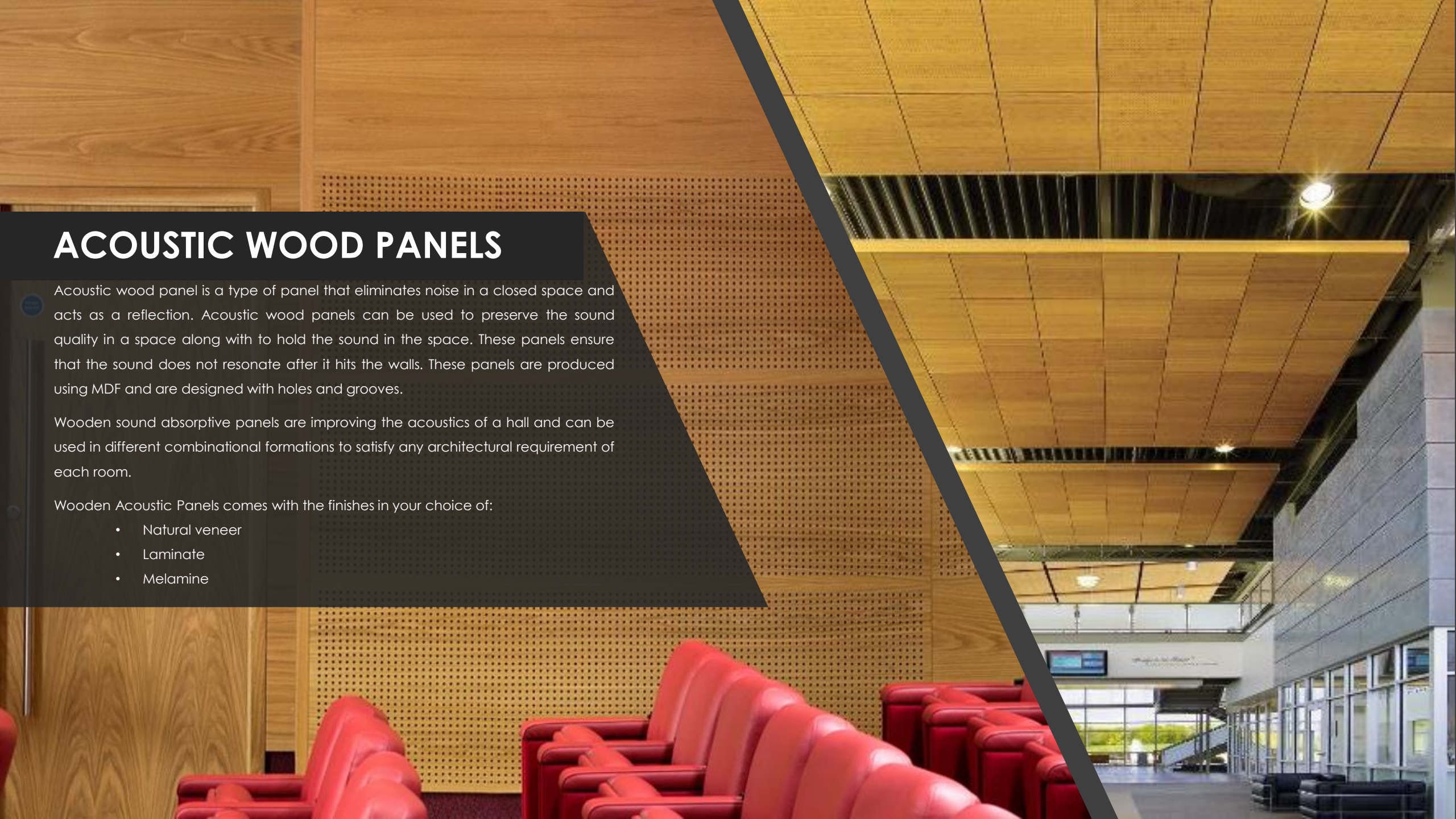
# ACOUSTIC WOOD PANELS

Acoustic wood panel is a type of panel that eliminates noise in a closed space and acts as a reflection. Acoustic wood panels can be used to preserve the sound quality in a space along with to hold the sound in the space. These panels ensure that the sound does not resonate after it hits the walls. These panels are produced using MDF and are designed with holes and grooves.

Wooden sound absorptive panels are improving the acoustics of a hall and can be used in different combinational formations to satisfy any architectural requirement of each room.

Wooden Acoustic Panels comes with the finishes in your choice of:

- Natural veneer
- Laminate
- Melamine





# ACOUSTIC DROP CEILING

For home theaters, media or game rooms, or any room where noise is an issue, acoustic drop ceiling tiles can help absorb sound and reduce echo while also preventing sound from traveling to adjacent rooms. Here's how to make sense of acoustic ratings and what they mean for noise control in your home.





## DEMOUNTABLE GLASS PARTITIONS & FIXTURES

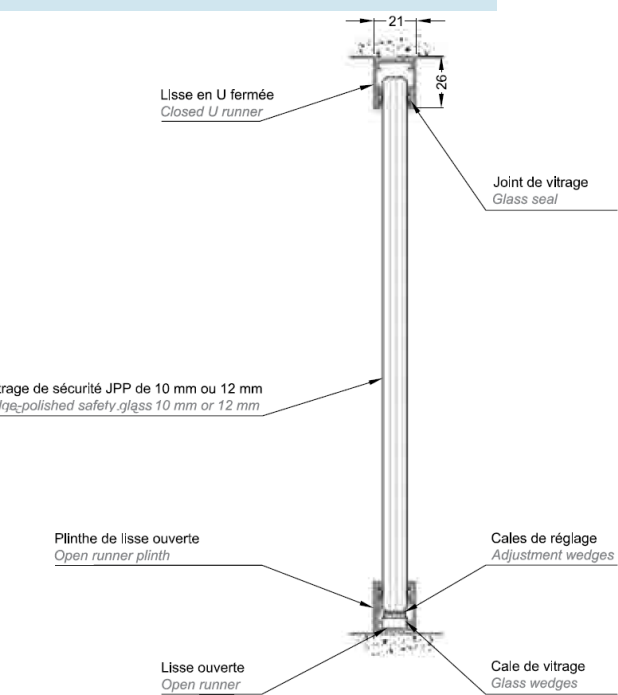
Demountable Office Partitions with single and double edge to edge glazing. It is available as,

- 21mm thick Demountable Aluminum partition for Single glazed frameless full-height (10 or 12 mm) toughened glass with Acoustic values of up to 38 dB.
- 77mm & 103mm thick Demountable Aluminum partitions for Double glazed partition with Acoustic values of up to 48 dB.

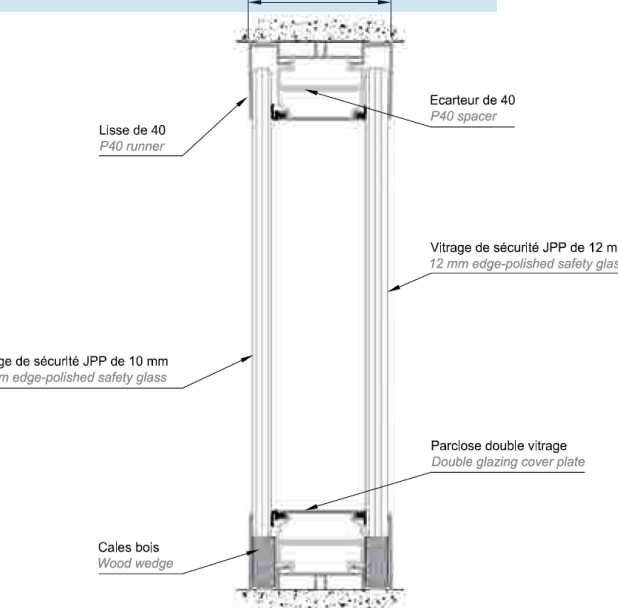




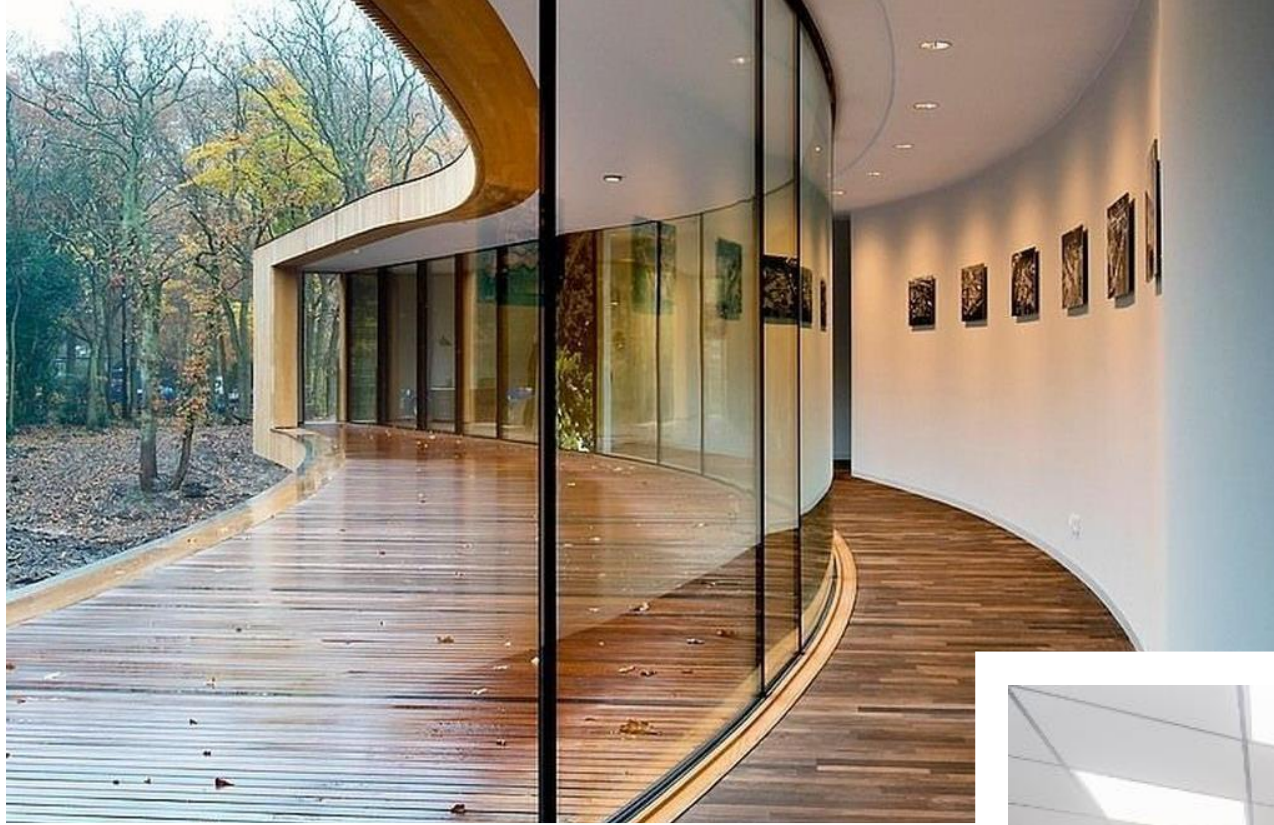
SINGLE GLAZED



DOUBLE GLAZED







## **DEMOUNTABLE PARTITIONS - CURVED GLASS WALL**





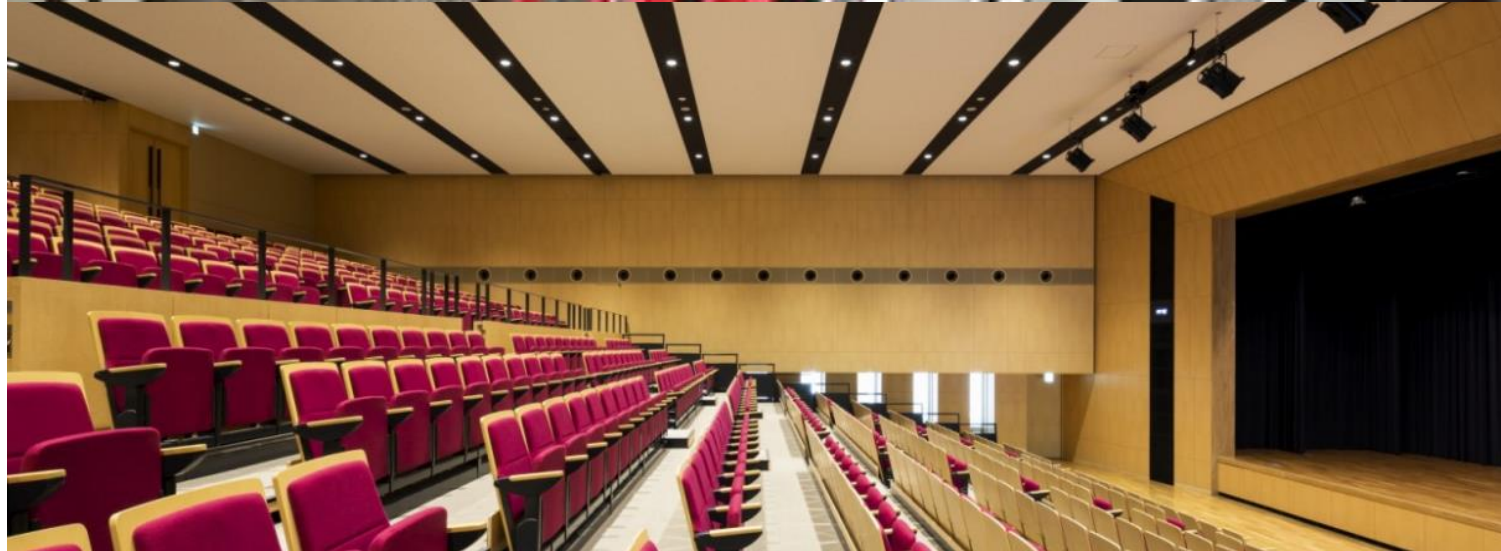


# AUDITORIUM SEATING

We offer a wide range of seating for

- Auditoriums
- Theatres
- Lecture halls
- Multipurpose halls
- Sports venues
- Cinemas











# RETRACTABLE SEATING & STAGES

**Retractable seating** (also known as **Telescopic seating**) is a system in which audience seating can be retracted and stored in a wall, or below a stage.







# HOME THEATRE SEATING









## HIGH PRESSURE LAMINATE (HPL) CUBICLES & LOCKERS

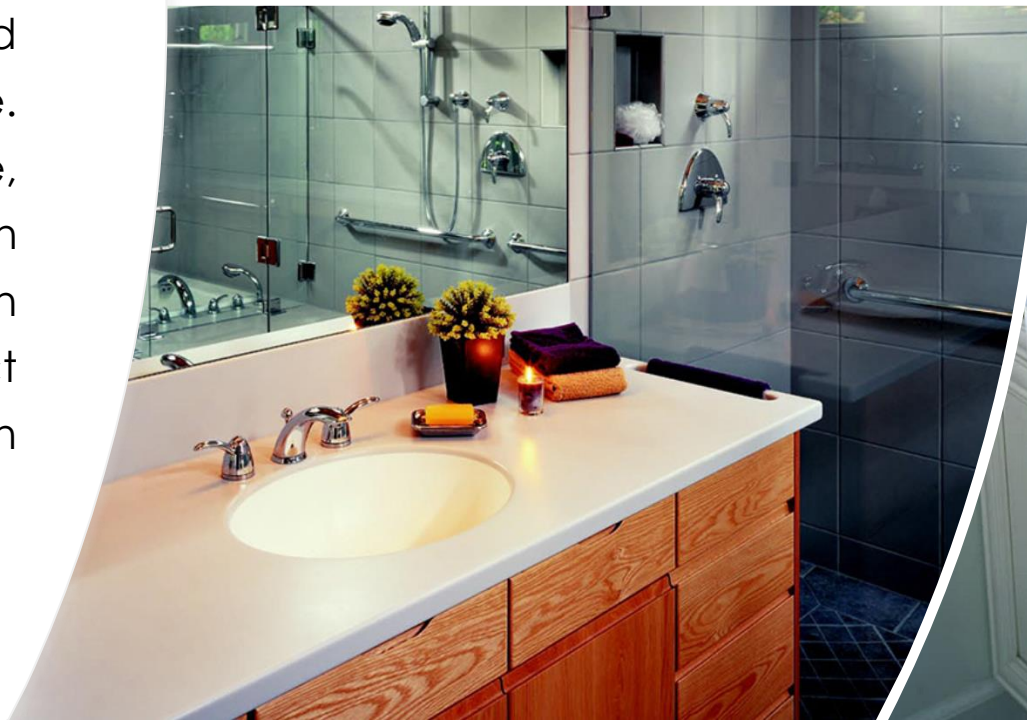
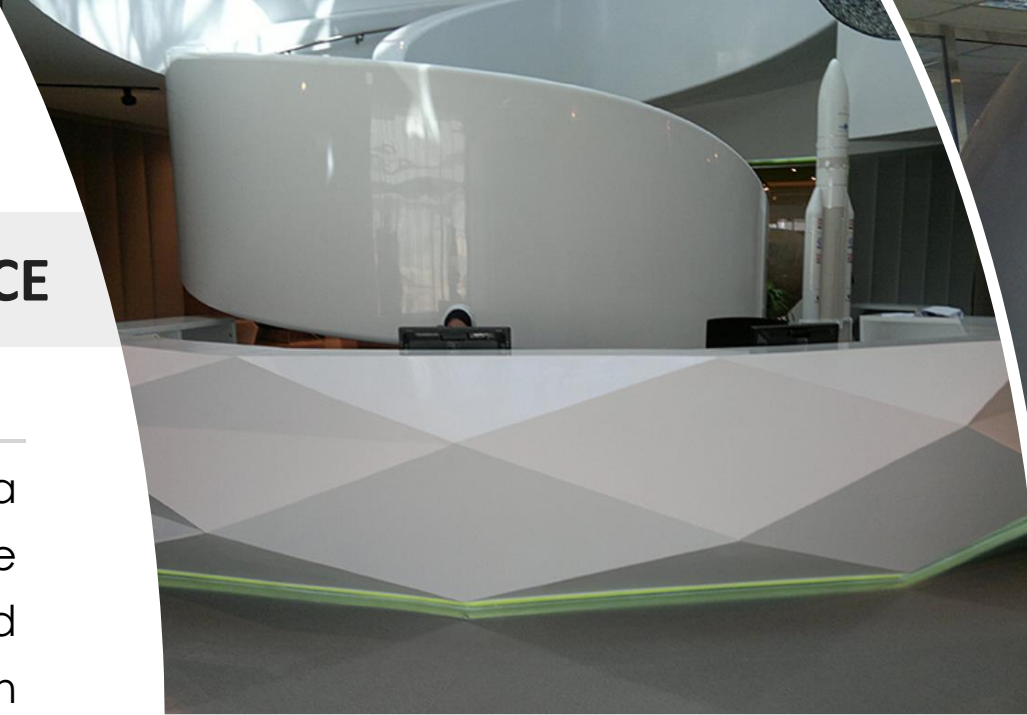
- Toilet Cubicle Partitions and Lockers made of **High Pressure Compact Laminated (HPL)** .
- For interior use as washroom cubicles, lockers or laboratory furniture.
- Solid laminated HPL is impressively strong, damage resistant and has remarkable structural stability.





## ACRYLIC SOLID SURFACE

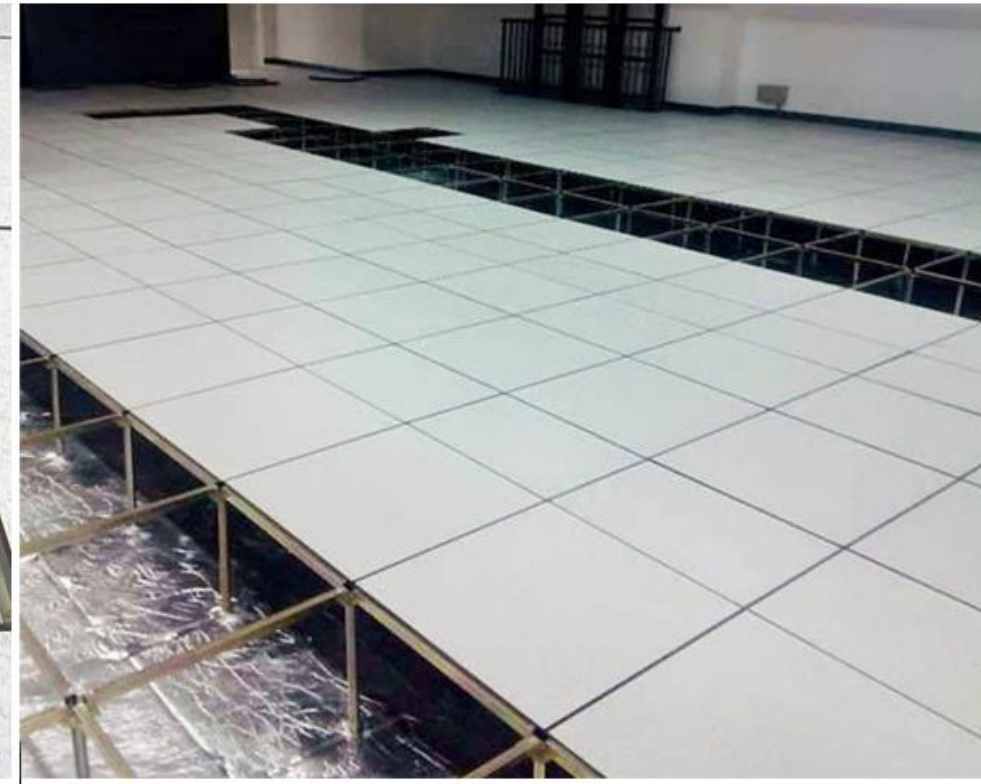
The Acrylic Solid Surface is a product available in a wide range of colors and unlimited patterns of application having seamless joints and comes with total hygiene. They are highly durable, nonporous and easy to clean material with and high resistance against impact and thermal shock, stain and chemicals.





# RAISED ACCESS FLOORING

Raised access flooring is a floor that sits atop the existing floor, leaving room underneath for running cabling, ductwork and more.





# BAMBOO DECKING WITH MAGNET INSTALLATION

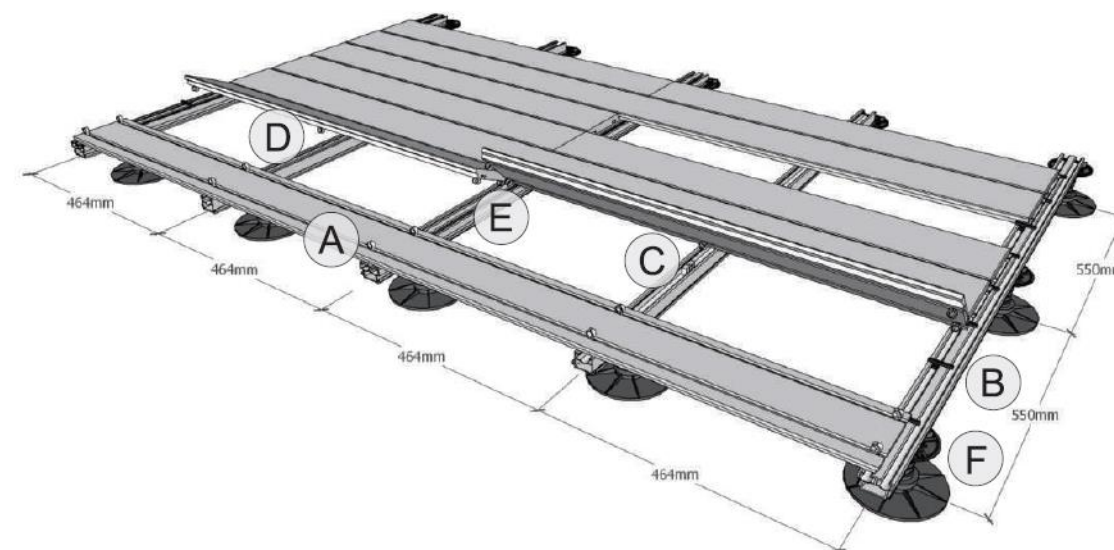
Bamboo Decking with Magnet Installation System, with patented Invisible profiling, magnet clips and a wide range of components. It comes out sustainable and high-durable top decking with invisible gap, accessible and easy installation. Applied at the walkway, boardwalk, terrace, balcony, dock for commercial and residential.







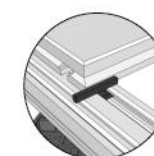
## The Magnet System Works over 6 Essential Elements



**A**

### Magnet Clip

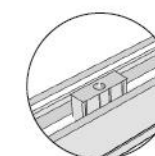
at the bottom of each board to allocate magnet clips.



**B**

### Spacer

between boards to leave 4mm invisible drainage and ventilation gap.



**C**

### Blocker

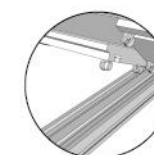
to keep all boards always in same place and prevent longitudinal movement.



**D**

### Aluminum Joist Single

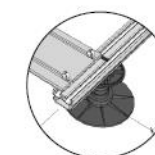
with a very specific and accurate geometry for the magnet clip to click inside; Pedestals and Wedges Levelling instruments.



**E**

### Aluminum Joist Double

for the short-end connections, which is a must for the good performance of the product.



**F**

### Base/Pedestals

Height Adjustable Pedestals from 5 up to 40 CM Levelling Wedges for an easy and accurate leveling

**Bamboo Products have been EPD Certified & Bamboo Material Provide Credits for the Green Building Certification**

### LEED V4/V4.1 BD+C

#### Criteria

MR Credit - Building life-cycle impact reduction

MR Credit - Building product disclosure and optimization – environmental product declarations

MR Credit - Building product disclosure and optimization – sourcing of raw materials

MR Credit - Building product disclosure and optimization – material ingredients

IEQ Credit - Low Emitting Materials

IEQ Credit - Acoustic performance

IEQ Credit - Interior Lighting

IN Credit - Innovation

\* For full report please refer to "Dasso Products LEED Compliance Statement"

### BREEAM International (2016)

#### Criteria

Mat 01 Life cycle impact

Mat 03 Responsible sourcing of construction products

Mat 05 Designing for durability and resilience

Mat 06 Material efficiency

Hea 01 Visual comfort

Hea 02 Indoor air quality

Hea 04 Thermal comfort

Hea 05 Acoustic performance

Ene 04 Low carbon design

Inn01 - Hea 02/ Mat01/ Mat03

\* For full report please refer to "Dasso Products Breeam Compliance Statement"

### Green Star V3.2

#### Criteria

MAT-2 Building Reuse

MAT-3 Sustainable Materials

MAT-4 Low Emitting Material

MAT-6 Timber

IEQ-6 Thermal Comfort

IEQ-13 Internal Noise Levels

Innovation -Adaptation and resilience

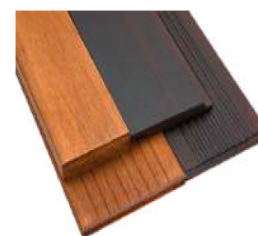
Culture heritage and identity

Financial transparency

Material life cycle impacts

Environmental product declarations

\* For full report please refer to "Dasso Products Green Star Compliance Statement"



**dassoXTR and dassoCTECH**

EPD No.: S-P-01928



## WPC DECKING, PERGOLAS & FENCING

WPC stands for wood polymer composite products, a blend of plastic and wood that can be applied for decking, walkways, balconies, marinas, planters, fencing and stairwells. It can be used for Pergolas and Canopies as well.





# RUBBER FLOORING

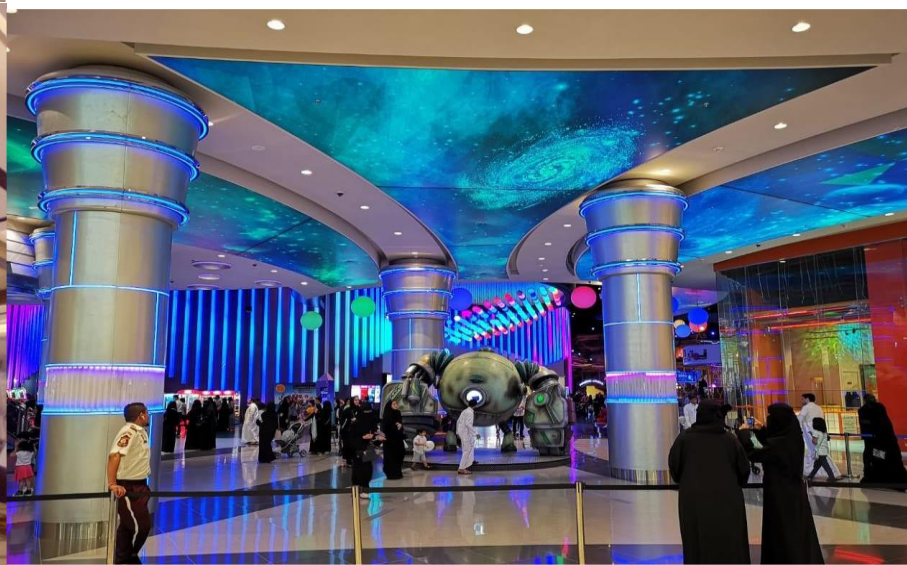
High performance rubber surfaces, ideal for flooring of schools, offices, hospitals, museums, and indoor public spaces. Rubber is one of the best materials for a final surface that needs to form a single seamless unit. A perfectly flat surface with as few seams as possible is crucial in places where hygiene is particularly important, like hospitals and nurseries.





# STRETCH CEILING SYSTEM

A **Stretch Ceiling** is a **suspended ceiling** system consisting of two basic components – a perimeter track and lightweight fabric membrane which stretches and clips into the track. In addition to **ceilings** the system can be used for wall coverings, light diffusers, floating panels, exhibitions and creative shapes.







# OUTDOOR FURNITURE

Premier high quality outdoor and contract furniture with cutting-edge design trends, that is beautiful yet functional, versatile products, for outdoors. Our range consists of teak outdoor, stainless steel, powder coated aluminum and wicker furniture collections.





